

Instructions



Amore Space Copenhagen 2018

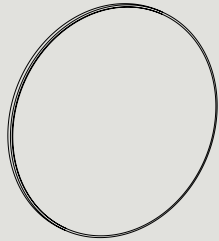
Congratulations with your new Amore mirror, designed by Space Copenhagen. We hope you will enjoy using this product and follow these instructions to ensure correct installation. If you have any questions or comments, please do not hesitate to contact us by mail on:

info@andtradition.com

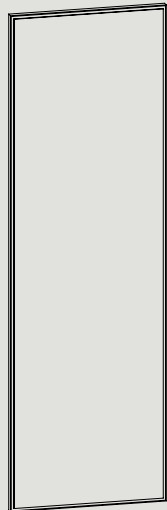
Amore Space Copenhagen 2018

Please read these instructions carefully and retain them for future reference to ensure that the product is used correctly. For your own safety, please study each step of this instruction manual first. Tradition is not responsible for any faults or damages caused by not following these instructions correctly.

SC49/
SC56



SC50



Contents

The package contains mirror SC49, SC50 or SC56:

- SC49: Ø115
- SC50: 190×60
- SC56: Ø70
- 2 nylon plugs (only suitable for drywall or concrete wall)
- 2 slotted screws

Tools needed

- Correct screws and plugs for the specific wall type
- Spirit level
- Electric drill
- Screwdriver

Safety precautions

- Dispose of plastic bag from packaging and do not allow children to play with it.
- Keep product well out of children's reach.
- The product is only intended for interior use.
- Make sure that the appropriate screws and plugs are used to mount the mirror.
- Two or more adults are needed to lift the mirror.
- The supplied plugs are only suitable for drywall and concrete wall.

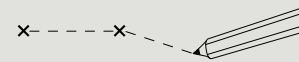
Cleaning instructions

- Use household glass cleaner for the mirror. To avoid damaging the surface of the mirror frame, always spray the glass cleaner onto a soft cloth and clean the mirror with the cloth. Do not spray directly on the mirror.
- Wipe mirror frame with a soft, damp sponge or cloth, and wipe immediately with a dry cloth.

- Do not use any abrasive cleaning tools such as steel wool, scouring sponges or stiff brushes.
- Never use strong cleaning agents such as white spirit, turpentine, household glass cleaner or cellulose thinners on the mirror frame.

Step 1

Using a spirit level, mark the placement of the mirror with a pencil. Amore SC50 can be hung both vertically and horizontally and the positioning and numbers of the screws vary accordingly.



Place screws with the following distance:

Amore SC49 - 75 cm

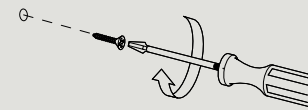
Amore SC50 (vertical) - 44 cm

Amore SC50 (horizontal) - 179 cm

Amore SC56 - 40cm

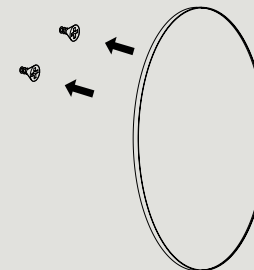
Step 2

Drill holes in the wall according to the marks and insert the appropriate type of screws and plugs for the type of wall, on which the mirror should be mounted. Make sure that the head of the screw is out far enough from the wall, so the suspension mount on the mirror has an adequate grip.



Step 3

Once the screws are securely in place the mirror can be mounted. Make sure that the suspension mounts have a firm grip on both screws. Please note that two adults are required to lift the mirror.



&Tradition®